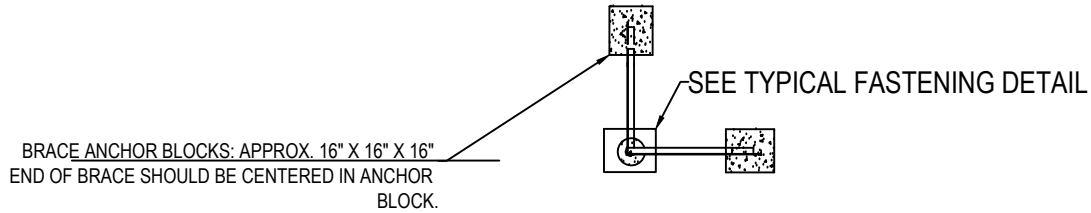
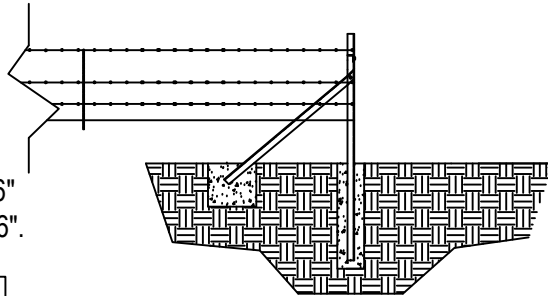
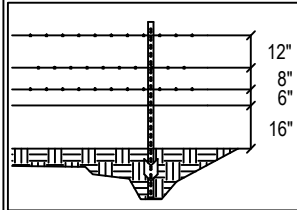


TOP VIEW TYPICAL 90 DEGREE CORNER

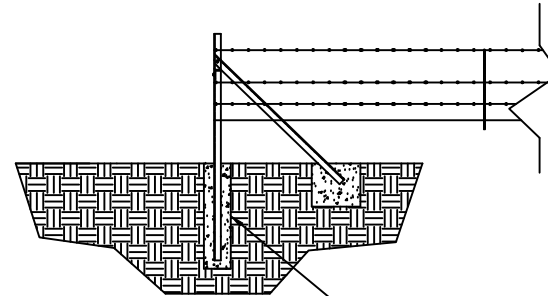


5'6" T-posts placed @ 16'6" o.c. driven to a depth of 1'6".

WIRE SPACING DIAGRAM

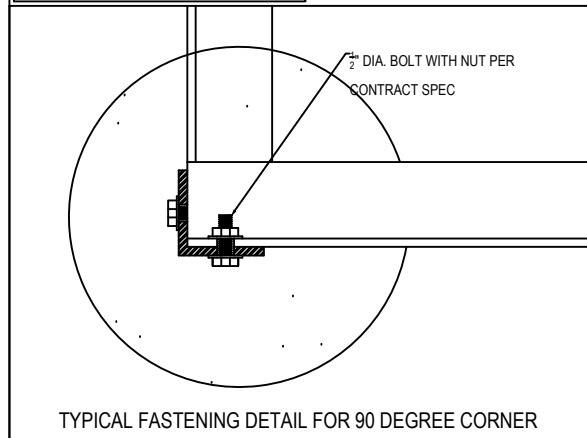


LEFT ELEVATION VIEW



RIGHT ELEVATION VIEW

BASE FOR VERTICAL STEEL ANGLES SHALL CONSIST OF A CYLINDRICAL CONCRETE FOOTING (MIN. 39" DEEP AND 10" IN DIAMETER). STEEL ANGLE SHALL BE CENTERED IN DIAMETER AND APPROX. 3" ABOVE BOTTOM OF CYLINDER.



TYPICAL FASTENING DETAIL FOR 90 DEGREE CORNER

NOTES:

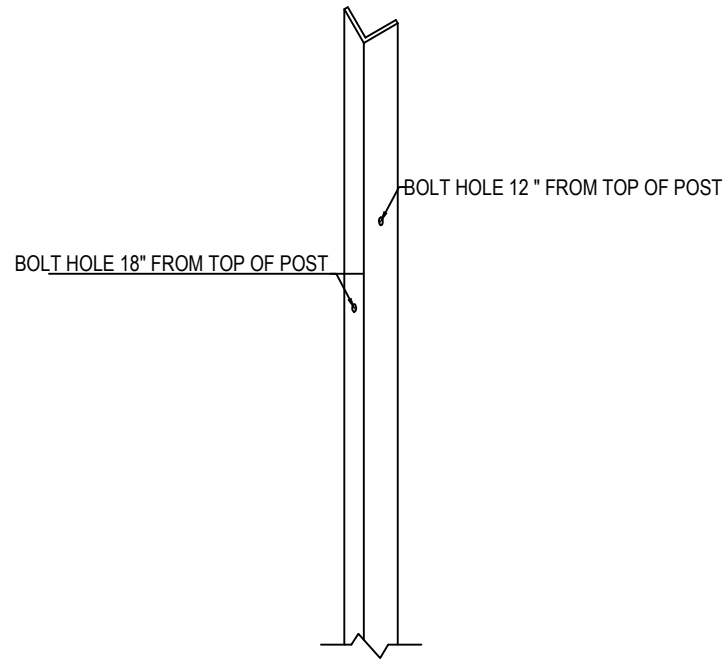
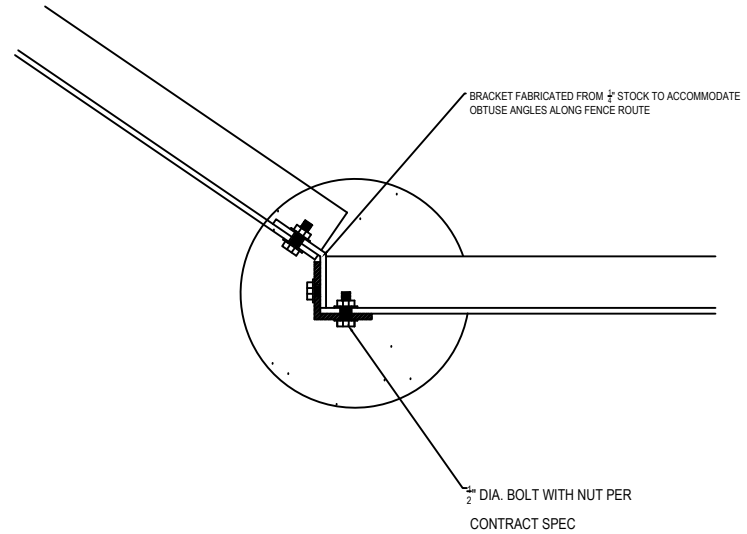
1. PANELS TO BE LOCATED AS PER CONTRACT MAPS.
2. PANELS CONSIST OF 3 CONTINUOUS PIECES OF 2- 1/2" X 2- 1/2" X 1/4" STEEL ANGLE.
3. ANGLE OF BRACE MEMBER MAY VARY WITH TOPOGRAPHY AND SITE CONDITIONS. THE CONTRACTOR SHALL NOT CUT OR MODIFY THE LENGTH OF THE ANGLE IRON, BRACES OR UPRIGHTS.
4. WIRE TO BE ATTACHED ACCORDING TO WIRE SPACING DIAGRAM.
5. CORNER BRACKETS FOR OBTUSE ANGLE CORNERS ARE TO BE FABRICATED FROM STEEL ANGLE MATERIAL OR FLAT STOCK THAT CONFORMS TO SAME SPECIFICATIONS.
6. SEE DRAWING 323116 (5a) FOR OBTUSE CORNER FASTENING DETAILS AND BOLT HOLE PLACEMENT FOR CORNERS.

UNITED STATES DEPARTMENT OF THE INTERIOR
BUREAU OF LAND MANAGEMENT
TAOS FIELD OFFICE, TAOS, NM 87571

**STEEL CORNER PANEL
(4 STRAND BARBED WIRE FENCE)**

DESIGNED BY:	BLM
REVIEWED BY:	BLM
APPROVED BY:	BLM
DRAWN: HAC	SCALE: NTS
DATE: DECEMBER 2020	SHEET 1 OF 2
DRAWING NUMBER:	323116-(5)

FASTENING DETAIL FOR OBTUSE CORNERS

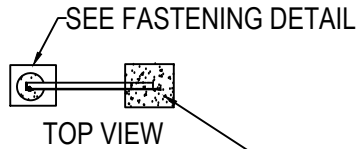


TYPICAL BOLT HOLE PLACEMENT FOR CORNERS

UNITED STATES DEPARTMENT OF THE INTERIOR
 BUREAU OF LAND MANAGEMENT
 TAOS FIELD OFFICE, TAOS, NM 87571

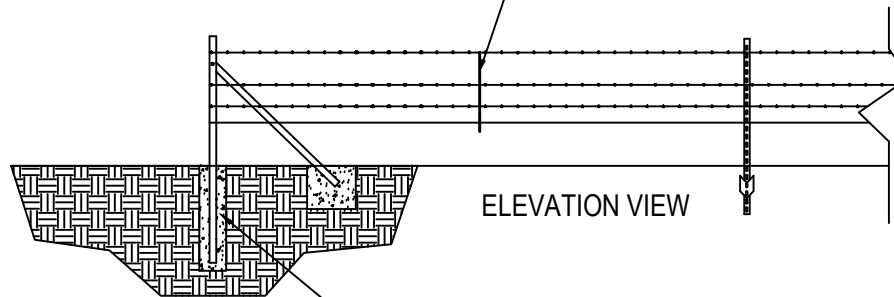
**STEEL CORNER PANEL
 (4 STRAND BARBED WIRE FENCE)**

DESIGNED BY:	BLM
REVIEWED BY:	BLM
APPROVED BY:	BLM
DRAWN: HAC	SCALE: NTS
DATE: DECEMBER 2020	SHEET 2 OF 2
DRAWINGNUMBER: 323116-(5a)	



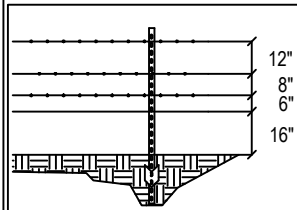
BRACE ANCHOR BLOCKS: APPROX. 16" X 16" X 16"
 END OF BRACE SHOULD BE CENTERED IN ANCHOR
 BLOCK.

TWISTED WIRE FENCE STAYS PLACED AT 16'-6" O.C.
 (CENTERED BETWEEN T-POSTS)

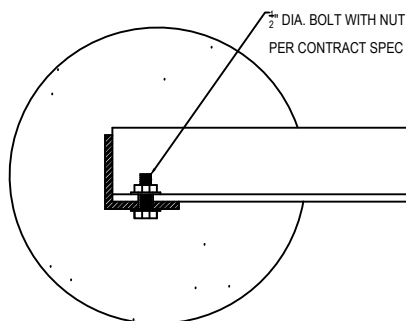


5/6" T-posts placed @ 16'6" o.c. driven to a
 depth of 16".

WIRE SPACING DIAGRAM



BASE FOR VERTICAL STEEL ANGLES SHALL
 CONSIST OF A CYLINDRICAL CONCRETE FOOTING
 (MIN. 39" DEEP AND 10" IN DIAMETER).
 STEEL ANGLE SHALL BE CENTERED IN DIAMETER
 AND APPROX. 3" ABOVE BOTTOM OF CYLINDER.



FASTENING DETAIL

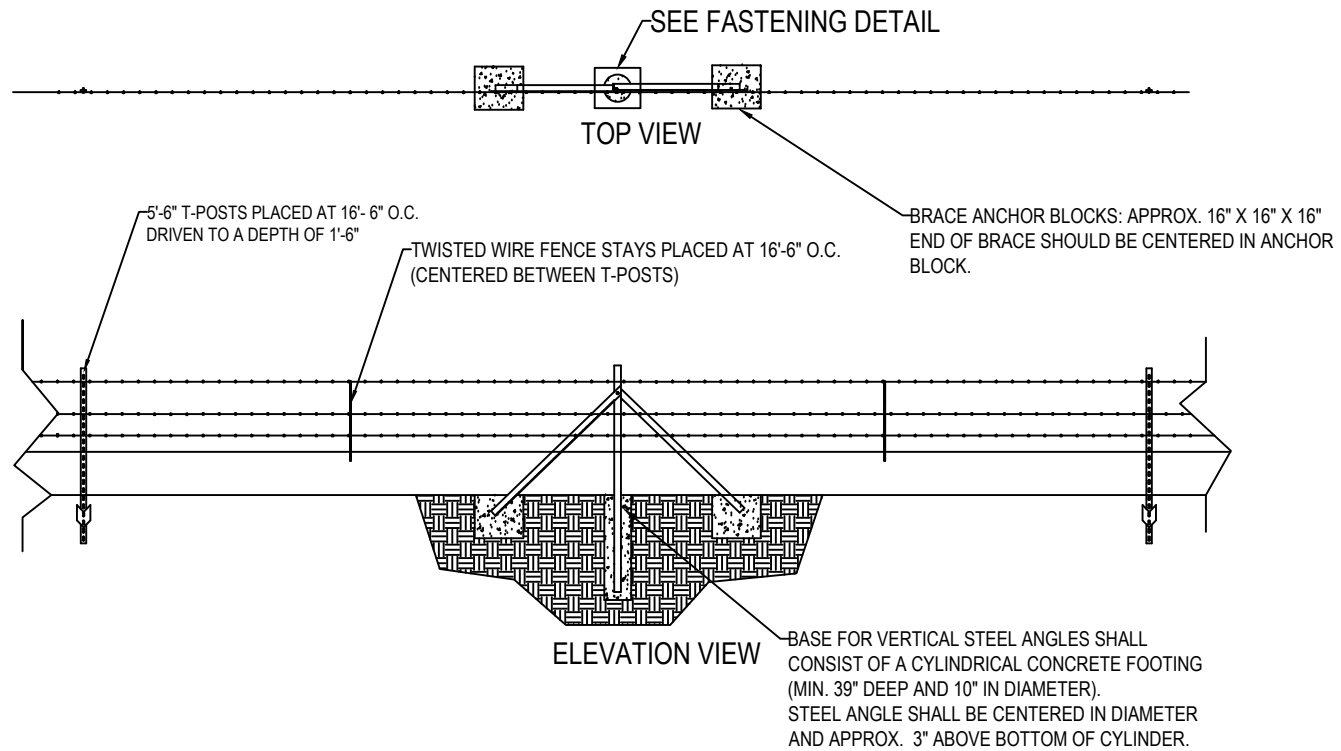
NOTES:

1. PANELS TO BE LOCATED AS PER CONTRACT MAPS.
2. PANELS CONSIST OF 2 CONTINUOUS PIECES OF 2- 1/2" X 2- 1/2" X 1/4" STEEL ANGLE.
3. ANGLE OF BRACE MEMBER MAY VARY WITH TOPOGRAPHY AND SITE CONDITIONS. CONTRACTOR SHALL NOT CUT OR MODIFY THE LENGTH OF THE ANGLE IRON, BRACE OR UPRIGHT.
4. WIRE TO BE ATTACHED ACCORDING TO WIRE SPACING DIAGRAM.

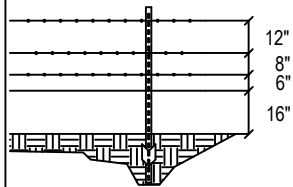
UNITED STATES DEPARTMENT OF THE INTERIOR
 BUREAU OF LAND MANAGEMENT
 TAOS FIELD OFFICE, TAOS, NM 87571

**STEEL END PANEL
 (4 STRAND BARBED WIRE FENCE)**

DESIGNED BY:	BLM
REVIEWED BY:	BLM
APPROVED BY:	BLM
DRAWN: HAC	SCALE: NTS
DATE: DECEMBER 2020	SHEET 1 OF 1
DRAWING NUMBER: 323116-(3)	



WIRE SPACING DIAGRAM

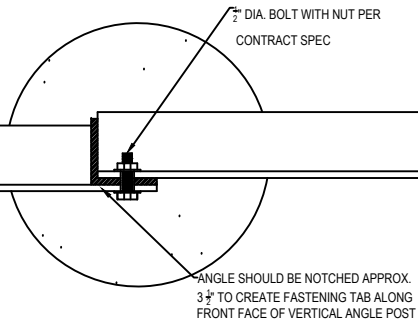


ELEVATION VIEW

BASE FOR VERTICAL STEEL ANGLES SHALL CONSIST OF A CYLINDRICAL CONCRETE FOOTING (MIN. 39" DEEP AND 10" IN DIAMETER). STEEL ANGLE SHALL BE CENTERED IN DIAMETER AND APPROX. 3" ABOVE BOTTOM OF CYLINDER.

NOTES:

1. PANELS TO BE LOCATED AS PER CONTRACT MAPS. MAXIMUM DISTANCE BETWEEN PANELS SHALL NOT EXCEED 1320 FEET.
2. PANELS CONSIST OF 3 CONTINUOUS PIECES OF 2- 1/2" X 2- 1/2" X 1/4" STEEL ANGLE. SOME NOTCHING OF STEEL MEMBERS IS REQUIRED. (SEE FASTENING DETAIL).
3. ANGLE OF BRACE MEMBER MAY VARY WITH TOPOGRAPHY AND SITE CONDITIONS. CONTRACTOR SHALL NOT CUT OR MODIFY THE LENGTH OF THE ANGLE IRON, BRACE OR UPRIGHT.
4. WIRE TO BE ATTACHED ACCORDING TO WIRE SPACING DIAGRAM.

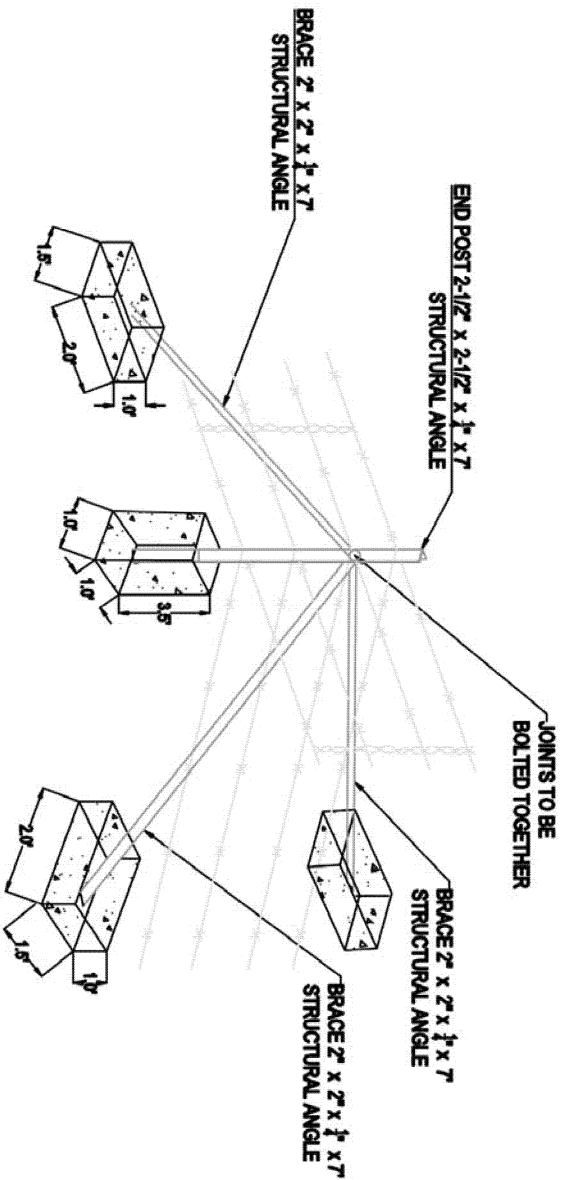


FASTENING DETAIL

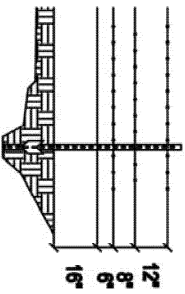
UNITED STATES DEPARTMENT OF THE INTERIOR
BUREAU OF LAND MANAGEMENT
TAOS FIELD OFFICE, TAOS, NM 87571

**STEEL STRESS PANEL
(4 STRAND BARBED WIRE FENCE)**

DESIGNED BY:	BLM
REVIEWED BY:	BLM
APPROVED BY:	BLM
DRAWN: HAC	SCALE: NTS
DATE: DECEMBER 2020	SHEET 1 OF 1
DRAWING NUMBER: 323116-(4)	



WIRE SPACING DIAGRAM

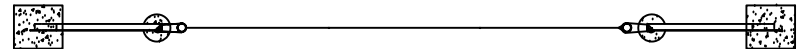


- NOTES:
1. PANELS TO BE LOCATED AS PER CONTRACT MAPS.
 2. PANELS CONSIST OF 4 CONTINUOUS PIECES OF (1) 2-1/2" X 2-1/2" X 1/4" X 7" STEEL ANGLE END POST & (3) 2" X 2" X 1/4" X 7" STRUCTURAL ANGLE BRACES.
 3. ANGLE AND LENGTH OF BRACE MEMBER WILL VARY WITH TOPOGRAPHY AND SITE CONDITIONS.
 4. WIRE TO BE ATTACHED ACCORDING TO WIRE SPACING DIAGRAM.

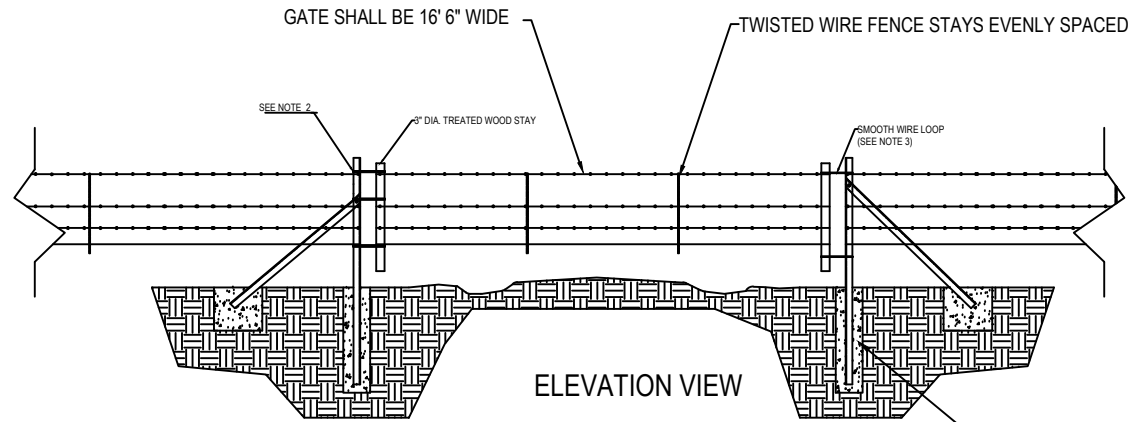
UNITED STATES DEPARTMENT OF THE INTERIOR
 BUREAU OF LAND MANAGEMENT
 PECOS DISTRICT OPERATIONS OFFICE
 ROSWELL, NM 88201

**THREE-BRACE
 CORNER PANEL**

DESIGNED BY:	BLM	SCALE: NTS
REVIEWED BY:	BLM	SHEET 1 OF 1
APPROVED BY:	BLM	
DRAWN: DSW		
DATE: 9 AUG22		
DRAWING NUMBER:	N/A	



TOP VIEW

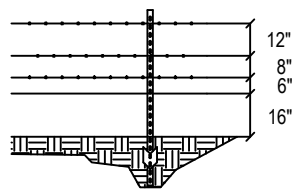


ELEVATION VIEW

BASE FOR VERTICAL STEEL ANGLES SHALL
CONSIST OF A CYLINDRICAL CONCRETE FOOTING
(MIN. 39" DEEP AND 10" IN DIAMETER).
STEEL ANGLE SHALL BE CENTERED IN DIAMETER
AND APPROX. 3" ABOVE BOTTOM OF CYLINDER.

5/8" T-posts placed @ 16'6" o.c.
driven to a depth of 1'6".

WIRE SPACING DIAGRAM



NOTES:

1. WIRE GATES TO BE LOCATED AS PER CONTRACT MAPS.
2. "HINGED" SIDE OF GATE SHALL BE SECURED TO END PANEL WITH SMOOTH WIRE AT TOP BOTTOM AND CENTER OF TREATED WOOD STAY.
3. OPENING END OF GATE SHALL BE EQUIPPED WITH A SMOOTH WIRE LOOP AT TOP AND BOTTOM OF STAY AS IS COMMON PRACTICE FOR FASTENING WIRE GATES.
4. WIRE TO BE ATTACHED ACCORDING TO WIRE SPACING DIAGRAM.
5. SPACING OF TWISTED WIRE STAYS IS DEPENDENT ON GATE WIDTH.
6. WIRE GATE ASSEMBLY INCLUDES 2 END PANELS AND ONE WIRE GATE

UNITED STATES DEPARTMENT OF THE INTERIOR
BUREAU OF LAND MANAGEMENT
TAOS FIELD OFFICE, TAOS, NM 87571

**WIRE GATE ASSEMBLY
(4 STRAND BARBED WIRE FENCE)**

DESIGNED BY:	BLM
REVIEWED BY:	BLM
APPROVED BY:	BLM
DRAWN: HAC	SCALE: NTS
DATE: DECEMBER 2020	SHEET 1 OF 1
DRAWING NUMBER:	323116-(6)